

LIFESTYLES



BY BARONS



CLASSIC ELEGANCE AND
DESIGN...



LIFESTYLES BY BARONS WELCOMES YOU HOME TO *Crofton*

Crofton's unique renovation was inspired by a traditional and classic design.

A floor to ceiling grand fireplace was added to the family room, a luxurious reading seat was added to the living area, and the entry was updated to add energy efficiency and elegance.

While the client did deviate from our originally proposed designs, we believe that the end design delivered everything that the client requested without compromising on quality and elegance.

After we provided a design for the entire home, the renovation occurred in multiple phases. The basement was completed first, and the clients were so pleased that they invited us back in to renovate the main floor as well.

The work done at Crofton was not only meant to be practical but also beautiful in design based on timeless elegance. In order to open up the spaces in the basement as well as on the main floor, we added significant engineered beams that make the entire home more structurally secure than when it was built.



Rick Inacio
Executive VP Sales



LIFESTYLES
BY BARONS

YOUR FULL DESIGN
& BUILD COMPANY

LIFESTYLES BY BARONS WELCOMES YOU HOME TO *Crofton*



THE BEFORE

The Crofton home was originally designed as your typical builder grade home. The walls of the home divided up each individual space making the rooms appear extremely cramped and small. When we began designing the new home, flow was the most important element we took into consideration. This resulted in some significant structural changes to the layout of the home.



THE DESIGN

Working with the unique architectural elements of the home we realized that the ceilings could be vaulted to give the home a grander feel. Our original designs included vaulted ceilings in the relocated kitchen, including a floor to ceiling fireplace configuration to open up the space. We believe that this design showcases our originality as a design company.



THE PROJECT

We've taken a home that was completely divided and opened it up completely. Several spaces were combined and an open-concept plan was drawn for the home with much better flow. While the homeowner opted for one of our simpler designs, in the end, we believe that the final project was the perfect fit for this family.

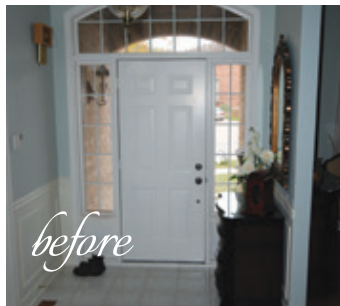


LIFESTYLES
BY BARONS

YOUR FULL DESIGN
& BUILD COMPANY

THE ENTRY

We've extended the entry by running patterned stone along the entire length of the hallway, and replaced the front door for a more elegant feel. Our team of expert carpenters replaced the picture frame molding on the walls with true wainscoting. A new wall colour also brightened the space making it more inviting.



THE FAMILY ROOM

The family room at Crofton was closed off from the rest of the home and was much smaller. We've opened up the entire space, and repositioned the dining room to a more favourable area of the home. We introduced a classic floor to ceiling fireplace, finished in the same granite found in the kitchen, to tie both open-concept spaces together.



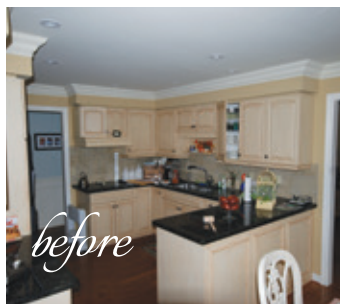
THE OPEN CONCEPT

In order to improve the flow of the home and add a clean sightline down the main floor, significant structural changes were made. The walls and beams separating the kitchen from the family room, and between the kitchen and previous dining room, were taken down. These areas are now supported with new structurally sound engineered beams.



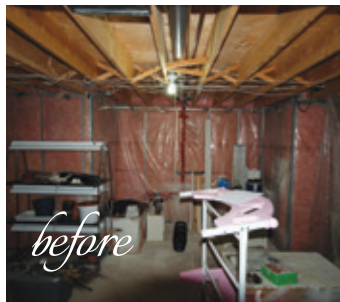
THE KITCHEN

The kitchen underwent a significant transformation. The space was completely opened up and the serving area significantly increased with the addition of a granite-topped island in the client's colour choice. Modern and sleek light cabinetry add brightness and light to the space, while the contracting island adds warmth.



THE BASEMENT

This large unfinished basement became the perfect space for a warm and cozy retreat for the family. We've again done significant work structurally, removing any load bearing beams and adding in solid engineered beams to remove the load bearing posts from the room. This gorgeous open space was framed with crisp white wainscoting and finished in the same elegant materials as the main level.



LIFESTYLES
BY BARONS

YOUR FULL DESIGN
& BUILD COMPANY



THE FINISHED BASEMENT

The Crofton clients initially came to us seeking a basement renovation, as their basement was completely unfinished. Initially the space was a logistical nightmare with support posts running along the length of the space on two sides. We installed engineered beams to allow for maximum access to the spacious room.

Once the structural elements were in place, our design team took over and crafted a warm and inviting space complete with a wet bar area, a new elegant bathroom, and a classic sitting area with wainscoting wrapped around the entire space.

The staircase was replaced including new pickets in a perfect piano finish, and a dark wood stain rail giving this basement a main floor feel.



LIFESTYLES
BY BARONS

YOUR FULL DESIGN
& BUILD COMPANY

LIFESTYLES BY BARONS
60 North Ridge Crescent
Georgetown, ON L7G 6E6

CLIENT CARE CENTRE
905.872.4777
info@lifestylesbybarons.com

MEDIA RELATIONS AND
INFORMATION
Roxana Owen,
Manager of Business Development
905.867.0077
roxana.owen@lifestylesbybarons.com



lifestylesbybarons.com