

LIFESTYLES



BY BARONS



FUNCTIONAL AND
BRIGHT...



LIFESTYLES BY BARONS WELCOMES YOU HOME TO
Tewsley

Often owners of smaller homes fear that because their square footage is limited, the design possibilities are also limited. At Tewsley, we've proven that any space can become more functional and glamorous with the right design.

We have completely transformed the entire living space of this home both structurally and functionally. In fact, we've even gone a step further in order to maximize space by adding a great room over the client's existing garage.

The new kitchen, with extra storage in a new walk-in pantry, flows beautifully into a spacious and light dining room, while a small flight of stairs brings you into the grand new great room. The ceiling of the great room was vaulted as well for maximum elegance and effect. A brand new doorway now leads to a future patio and deck structure that will be a fantastic summertime retreat. In addition, we were able to create a beautiful new Master Suite for the homeowner, including two new walk-in closets and private ensuite.

Tewsley is the perfect example of Lifestyles working with the client's needs to deliver a dream home.



Rick Inacio
Executive VP Sales



LIFESTYLES
BY BARONS

YOUR FULL DESIGN
& BUILD COMPANY

LIFESTYLES BY BARONS WELCOMES YOU HOME TO
Tewsley



THE BEFORE

This home was extremely dated when we first saw it. Seafoam blue rounded walls and yellow narrow hallways closed off every single room in this 70s retro build. The home's awkward configuration was also addressed in our design as we focused on merging spaces for improved flow and functionality.



THE DESIGN

Our design for the Tewsley project was intended to open up the small home to make it functional and airy. We suggested rebuilding the roof to give the home a grand and open feel, and we merged the kitchen, dining, and living spaces together to ensure the home would work for our client. Large windows and an oversized chimney configuration with a three-sided fireplace were a few of the design elements that we recommended.



THE PROJECT

The result of months of hard work is a beautiful and elegant space that is also functional. The entry, kitchen and dining room spaces have been merged into one open-concept space and a great room was added over the client's existing garage. A custom island was introduced to add additional counter space and to create a spacious entertaining area. The design was scaled down due to extensive structural work and being conscious of the client's budget.



LIFESTYLES
BY BARONS

YOUR FULL DESIGN
& BUILD COMPANY

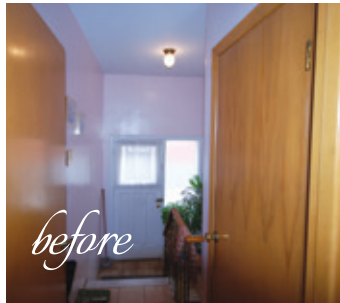
THE ENTRY

The front entry of the Tewsley residence was cut off from all of the other areas of the home and the entry hallway was narrow and very dark. We opened up the space but left a half-wall a touch of definition separating the entry from the new dining space. The space was finished with a beautiful new fiberglass front door, and full-wall closet.



THE STAIRCASE

The staircase to the basement in this home was rickety and again, very narrow. It was also located off of the main hallway in the home making furniture movement impossible and, in turn, not functional. The new staircase has now been incorporated into the main hallway and a large new door and window configuration allow significant natural light to brighten the space.



THE DINING ROOM

The dining room at Tewsley will truly be the home's main entertaining area. Connected to the main kitchen by a magnificent grand island and warmed by a double-sided fireplace, the dining space will make entertaining and clean up much easier with improved flow. A grand main window provides a beautiful view and plenty of natural light.



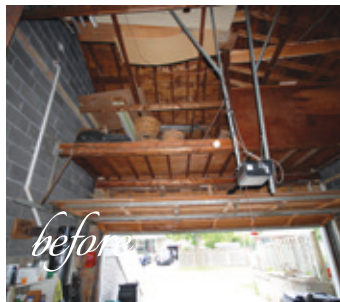
THE KITCHEN

We've opened up the dark and small room and turned it into an open-concept masterpiece. The open concept allowed for more storage space and a grand kitchen island was installed as a focal point to the room. Custom cabinetry disguise the fridge and the use of up lighting and down lighting accentuates the smoky grey granite countertops.



THE GREAT ROOM

The great room is a brand new space that we created above the existing garage at Tewsley. While the former living room space was cramped and dark, the new living space is grand and open with high ceilings and massive windows. A double-sided fireplace warms the space and a brand new exit has been created leading to a future deck/patio space.



LIFESTYLES
BY BARONS

YOUR FULL DESIGN
& BUILD COMPANY



THE MASTER BATH AND MAIN BATH

The master wing is complete with a private master bath that did not exist previously. It includes a beautiful vanity with significant cabinet storage space and a wonderful large window. The new walk-in shower includes a therapeutic pebble floor and ties the entire space together.

On the back of the home, the main bath is also stunning. We used the same natural stone floor in both bath spaces with a natural colour palette for the walls in order to make the home feel larger through continuity of materials and colours. The main bath features a large floating vanity and large tub, perfect for soaking in and gives this home a current and charming feel.



LIFESTYLES
BY BARONS

YOUR FULL DESIGN
& BUILD COMPANY

LIFESTYLES BY BARONS
60 North Ridge Crescent
Georgetown, ON L7G 6E6

CLIENT CARE CENTRE
905.872.4777
info@lifestylesbybarons.com

MEDIA RELATIONS AND
INFORMATION
Roxana Owen,
Manager of Business Development
905.867.0077
roxana.owen@lifestylesbybarons.com



lifestylesbybarons.com